

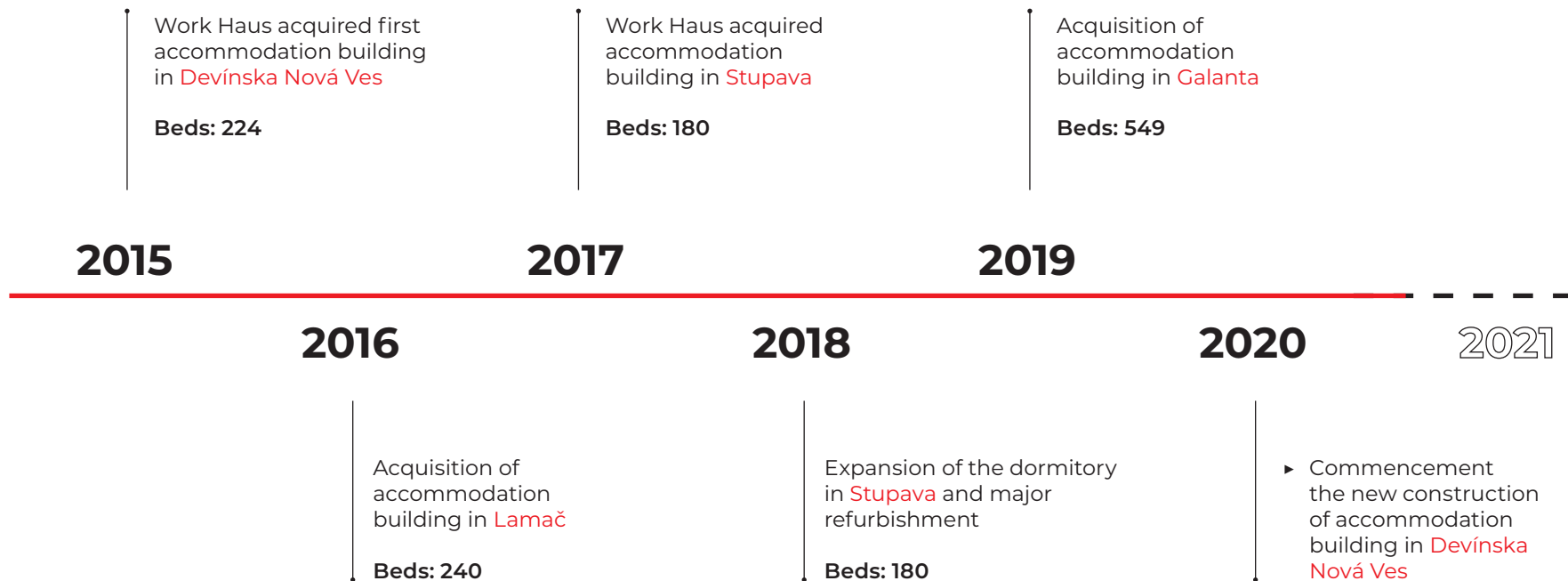


# **WORK & HOME**

**PROFESSIONAL OPERATOR OF ACCOMODATION  
FACILITIES AND DORMITORIES**

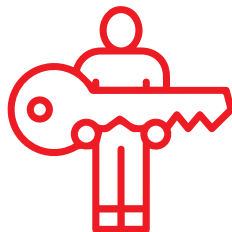
# HISTORY WORK & HOME

IN BRIEF



# OUR WORK AND STANDARDS

OUR COMMITMENT IS TO PROVIDE THE BEST QUALITY OF ACCOMMODATION IN THE CATEGORIES OF WORKERS ACCOMODATION



## WITH REGARD TO CLIENTS

- ▶ Accommodation units are situated close to main transport routes and key employers
- ▶ Close to social amenities
- ▶ With the possibility of modern services

## TO OFFER MORE

- ▶ We are constantly improving the quality standard
- ▶ We regularly receive feedback from our guests
- ▶ As a basic standard, we offer quality services (refrigerator on room; free WIFI; 24/7 reception; camera system, refreshment machines, cleaning etc.)

## STANDARDS

- ▶ We clean up common areas every day
- ▶ Kitchens are cleaned 3 times per day
- ▶ Adjustable intensity of room cleaning
- ▶ There are 4-6 persons per bathroom and toilet on the accommodation unit
- ▶ Possibility higher standard choice

# LOCATION

**ADDRESS:** ŽELEZNIČNÁ ULICA 49, STUPAVA 900 31

**GPS:** 48.269096, 17.017787

**STUPAVA**



# WORK & HOME STUPAVA

ACCOMMODATION FACILITY (DORMITORY) IS SITUATED IN A QUIET RESIDENTIAL PART OF STUPAVA DOMINATED BY HOUSES AND VILLAS. THE CITY CENTER WITH SHOPS, RESTAURANTS AND SERVICES IS WITHIN A WALKING DISTANCE.

Accommodation facility with excellent accessibility to the VW plant, located next to exit from Stupava in the direction of Devínska Nová Ves, which allows daily commuting of employees to VW within 10 minutes (distance up to 10 km) even in the morning rush hours. Excellent accessibility is also to the industrial park in Lozorno,

about 10 minutes - distance up to 10 km. Each room, including the apartments, is equipped with a TV and a refrigerator. The whole building is covered by wi-fi signal. In the corridors, on the 2nd and 3rd floors, there are separate rooms with additional toilets and kitchens.



**68 ROOMS**



**180 BEDS**



**24/7 RECEPTION**



**SHARED KITCHENS**



**SHADING TECHNOLOGY ON WINDOWS**



**CAMERA SURVEILLANCE OF COMMON SPACE**



**LAUNDRY ROOM**



**30 PARKING SPACES**



**SEPARATE TOILET AND BATHROOM ON THE UNIT**



**REGISTRATION OF TEMPORARY RESIDENCE**



**VENDING MACHINES**



**FREE HIGH-SPEED WI-FI**



**1962 M<sup>2</sup>**



# OUR ROOMS

WORK & HOME IS A GREAT PLACE TO LIVE , SLEEP COMFORTABLY WITH MINIMUM BACKGROUND NOISE AND RECOVER FOR THE NEXT WORKING DAY.



**3 BED ROOMS**  
**5 M<sup>2</sup>/PERSON**



**2 BED ROOMS**  
**7,5 M<sup>2</sup>/PERSON**



**ROOMS ARE**  
**LOCKABLE**



**SEPARATE TOILET**  
**ON THE UNIT**



**SEPARATE SHOWER**  
**ON THE UNIT**



**FRIDGE WITH**  
**FREEZER**

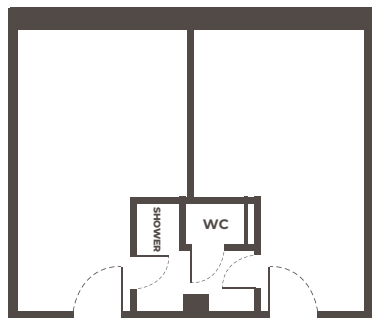


**FREE HIGH-SPEED**  
**INTERNET**



**TABLE, CHAIRS,**  
**CABINETS, SHELVES**

The rooms are organized in units - two rooms sharing one bathroom with shower and a separate toilet room. There are separate rooms with additional toilets and kitchens on each floor. Each guest has a quality bed with bed linen, chair, wardrobe, bedside table, shelf for personal belongings, etc. There is also a desk, a rubbish bin, refrigerator and window with shading technology. Each room has free high-speed Wi-Fi.





W



# CONTACT

**Martin  
Strnád**  
Executive Manager



+421 907 069 701



strnad@workhaus.sk



Codo s.r.o.  
Einsteinova 3692/21, 851 01 Bratislava

[WWW.WHH.SK](http://WWW.WHH.SK)  
[WWW.WORKHOME.SK](http://WWW.WORKHOME.SK)

## OTHER ACCOMMODATION OF WORK & HOME



### DEVÍNSKA NOVÁ VES

224 BEDS 91 ROOMS 1898 M<sup>2</sup>



### GALANTA

549 BEDS 188 ROOMS 6575 M<sup>2</sup>



### LAMAČ

240 BEDS 96 ROOMS 2310 M<sup>2</sup>