



WORK & HOME

PROFESSIONAL OPERATOR OF ACCOMODATION
FACILITIES AND DORMITORIES



HISTORY WORK & HOME

IN BRIEF

Work Haus first accommodation building in **Devínska Nová Ves**

Beds: 224

2015

Work Haus acquired accommodation building in **Stupava**

Beds: 180

2017

Acquisition of accommodation building in **Galanta**

Beds: 549

2019

2016

Acquisition of accommodation building in **Lamač**

Beds: 240

2018

Expansion of the accommodation building in Stupava and major refurbishment

Beds: 200

2020

- ▶ Commencement the new construction of accommodation building in **Devínska Nová Ves**

2021

OUR WORK AND STANDARDS

OUR COMMITMENT IS TO PROVIDE THE BEST QUALITY OF ACCOMMODATION IN THE CATEGORIES OF WORKER'S ACCOMODATION



WITH REGARD TO CLIENTS

- ▶ Accommodation units are situated close to major transport routes and key employers
- ▶ Close to all social amenities



TO OFFER MORE

- ▶ We are constantly improving the quality standard
- ▶ We regularly receive feedback from our guests
- ▶ As a basic standard, we offer quality services (refrigerator on room; free WIFI; 24/7 reception; camera system, refreshment machines and others)



STANDARDS

- ▶ We clean up common areas every day
- ▶ Kitchens are cleaned 3 times a day
- ▶ Adjustable intensity of room cleaning
- ▶ There are 4-6 persons per bathroom and toilet on the accommodation unit
- ▶ Higher standard choice

LOCATION

ADDRESS: DREVENÁ 888/3, 924 01, GALANTA

GPS: 48.185354, 17.727786

GALANTA

GÁŇ: 5 KM / 7 MIN
TRNAVA: 25 KM / 20 MIN
NITRA: 35 KM / 25 MIN
SEREĎ: 11 KM / 12 MIN
HLOHOVEC: 32 KM / 35 MIN
ŠAČA: 12 KM / 12 MIN
SENEC: 25 KM / 21 MIN
DUNAJSKÁ STREDA: 28 KM / 30 MIN



WORK & HOME GALANTA

THE ACCOMMODATION FACILITY IS LOCATED IN A STRATEGIC LOCATION
NEAR THE CENTER OF GALANTA NEAR THE KEY SOCIAL AMENITIES

We offer there are basic standard rooms (triple bedded rooms) and higher standard rooms (double bedded rooms)

The accommodation unit consists of an entrance hall, separate toilet and shower accessible from the hall, a space for hanging coats, space for shoe cabinet, fridge.

Furniture and comfortable beds are customized to enable maximum free space area in the room.

On each floor there is a large, modernly equipped kitchen with a common area including TV with an expanded selection of programs.



188 ROOMS



549 BEDS



**24/7
RECEPTION**



**CAMERA
RECORDINGS**



**REGULAR
MAINTENANCE**



**CLEANING
SERVICES**



**LAUNDRY
ROOM**



**UNDER
THE SURVEILLANCE
OF THE CAMERAS**



**ROOMS
ACCESSIBLE
BY LIFT**



**MODERN
KITCHEN**



WI-FI



**TABLETENNIS
AND ARBORS**



OUR ROOMS

WORK & HOME IS A GREAT PLACE TO COMFORTABLY SLEEP
AND RECHARGE YOUR BATTERIES FOR THE NEXT WORKING DAY



3 BED ROOMS
6.5 M²/PERSON



2 BED ROOMS
9 M²/PERSON



**ROOMS ARE
LOCKABLE**



**SEPARATE TOILET
ON THE UNIT**



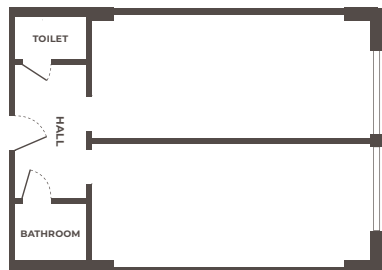
**LOCKERS
IN KITCHENS**



**SEPARATE SHOWERS
ON THE UNIT**



**FRIDGE WITH
FREEZER**



Each guest has a quality bed with bed linen, chair, wardrobe, bedside table, shelf for personal belongings and locker in the kitchen.

As standard, the hotel has up to 6.5 square meters of bed area. A fridge and freezer are also available, as well as an opening window with shading technology and an insect net. Both the room and the separate bathroom and toilet are lockable.





W



MAISONETTE APARTMENTS

TWO-STOREY APARTMENTS IN THE WORK & HOME ARE AN EXCELLENT SOLUTION FOR A LONG TERM ACCOMMODATION FOR COUPLES

The area is dominated by a massive wooden staircase. On the upper storey, there is a sleeping area with comfortable bunks and bedside tables. The lower storey is designated for active work. The interior is beautifully illuminated, airy and made from quality materials. The rooms have enough storage space - cabinets, drawers, shelves. Every room includes a large screen TV. The lighting in

the apartments is designated so that there is enough light for every activity, while the light is not interrupting in the places where it is not wanted at the moment.

The advantage of the new apartments is that occupants can use all the services the dormitory provides, while being placed in a separate unit accessible by their own elevator, therefore having enough privacy and comfort.



W





W



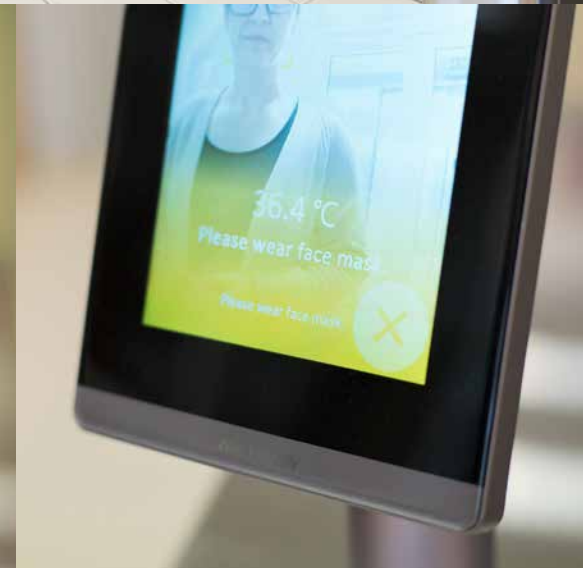
MODERN EQUIPMENT

NEW SYSTEM WITH A TURNSTILE AND THERMOGRAPHIC CAMERA AT THE BUILDING'S ENTRANCE FOR HIGHER EMPLOYEE AND OCCUPANT SAFETY

There is a 24/7 lobby at the building's entrance. Modern contactless system with a turnstile and thermographic camera prevents unauthorized entry for unaccommodated guests. It will also measure the entering person's body temperature and check if the value is in the required interval. If needed, it

also checks if entering person wears a mask.

There is a completely equipped kitchen on every storey, where the occupants can prepare their own food. For cleaning clothes there is a fully automated laundry, where modern washing machines and dryers are available.





W




**IN CASE OF YOUR INTEREST
WE WILL BE PLEASED IF YOU CONTACT US**

**Marek
Ondrejka**
CEO

 +421 903 253 981
 ondrejka@workhaus.sk

**Jana
Gžibová**
Sales Manager

 +421 903 858 534
 gzibova@workhaus.sk

 Black Swan Investment Fund 1, s.r.o.
Einsteinová 21, 851 01 Bratislava.

WWW.WHH.SK
WWW.WORKHOME.SK

OTHER ACCOMMODATION OF WORK & HOME



STUPAVA

180 BEDS 74 ROOMS 1962 M²



DEVÍNSKA NOVÁ VES

224 BEDS 91 ROOMS 1898 M²



LAMAČ

240 BEDS 96 ROOMS 2310 M²